



## Incubator Profile



*Driving Impact, Enabling Growth!*



## About Proxsis Incubator



a Member of  
PROXSYS



**Proxsis Incubator** adalah institusi yang fokus pada pengembangan entrepreneurship untuk membantu para pelaku bisnis dalam mewujudkan bisnis yang profitable dan berdampak. Untuk merealisasikan tujuan tersebut Proxsis Incubator memiliki ekosistem bisnis lengkap agar para entrepreneur dapat fokus pada pengembangan bisnis.

### Our Vision

*Menjadi Partner terpercaya bagi pelaku usaha dalam menghadapi tantangan bisnis dan meraih pertumbuhan berkelanjutan melalui konsultasi dan pendampingan yang solutif, inovatif, profesional, dan berorientasi pada proses bisnis sesuai tangga bisnis.*

### Our Mission

- **Menyelenggarakan program inkubasi** dan akselerasi bisnis yang terstruktur, berbasis data, dan disesuaikan dengan fase "Tangga Bisnis" setiap pengusaha.
- **Menjembatani akses strategis** entrepreneur dengan ekosistem keahlian profesional dan kemitraan B2B,
- **Menjembatani akses pendanaan** entrepreneur melalui koneksi jaringan investor dan mitra pembiayaan strategis guna mengakselerasi eskalasi bisnis
- **Mendorong transformasi bisnis** UMKM & Startups menuju standar enterprise yang adaptif, tangguh, dan berkelanjutan.

### Our Focus

- Entrepreneur Development Program
- Pendampingan Bisnis
- Konsultasi Bisnis
- 1on1 Mentoring
- Connecting-Collaborating with potentials partners
- Akselerasi Bisnis (Proxsis Ecosystem Support)

# Proxisis & Co. has been Providing **the Best Knowledge Based Solutions** since our birth in 2005

Today, Proxisis stands proud with multiple sub holding companies and more than 50 business cells that collaborate within and beyond our ecosystem to provide the best solutions for the nation's and world's toughest challenges.

Through an entrepreneurial based development, proxisis continues to innovate and grow by establishing a multitude of knowledge-based solutions as well as external investment and business incubation for leverage

Proxisis established several business cells namely out IT GRC consultant and several professional development solutions

Growth through Intensive investment & incubation for new entrepreneurs from within the company

Proxisis expands to east Indonesia by establishing Proxisis East based in Surabaya

Proxisis establishes its first business in 2005 with strong knowledge business service

Business model innovation: hub & cell based on entrepreneurship and strong core values.



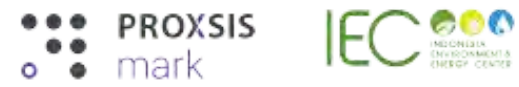
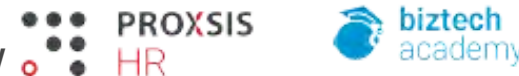
2005-2007



2007-2010



2010-2018



2018-2020

2020-Now

Investment in Technology and Innovation for superior products to supplement exponential growth strategy



# Our Wide Range of Solutions



## Business Strategy

Our Business Strategy services leverage a holistic approach, combining in-depth market analysis with your unique strengths and aspirations.

[strategy.proxsisgroup.com](https://strategy.proxsisgroup.com)



## Business Process Management

Our Business Process Management (BPM) services empower you to optimize your organization's core functions.

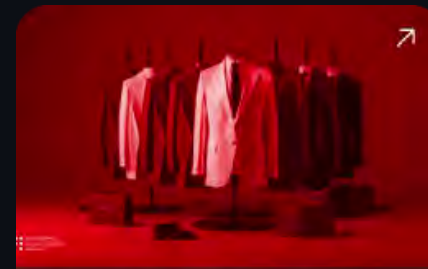
[strategy.proxsisgroup.com](https://strategy.proxsisgroup.com)



## Governance, Risk, & Compliance

Governance, Risk & Compliance (GRC) services provide a comprehensive framework to safeguard your organization's integrity and long-term success.

[grc-indonesia.com](https://grc-indonesia.com)



## People & Organization

Proxsis fosters a dynamic and collaborative environment where talented individuals with an entrepreneurial spirit thrive.

[hr.proxsisgroup.com](https://hr.proxsisgroup.com)



## Marketing & Branding

Our Marketing & Branding services help you craft a compelling narrative that resonates with your target audience.

[marketing.proxsisgroup.com](https://marketing.proxsisgroup.com)



## IT Governance, Risk, & Compliance

IT Governance establishes a structured framework to ensure the alignment of your organization's IT infrastructure & practices with its overall business goals.

[itgid.org](https://itgid.org)



## IT Operations & Cyber Security

Our IT Operations & Cyber Security services provide a comprehensive shield for your organization's technology infrastructure.

[techhub.proxsisgroup.com](https://techhub.proxsisgroup.com)



## Digital Transformation

Digital transformation is the strategic integration of digital technologies across all aspects of your business.

[digital.proxsisgroup.com](https://digital.proxsisgroup.com)



## Health & Safety

Our Health, Safety, and Environment (HSE) services prioritize the well-being of your employees and the protection of the environment.

[synergysolusi.com](https://synergysolusi.com)



## Environment, Energy & Sustainability

Our Environment, Energy & Sustainability services provide a comprehensive approach to minimizing your environmental footprint, optimizing energy usage, and achieving long-term sustainability goals.

[sustainability.proxsisgroup.com](https://sustainability.proxsisgroup.com)



## Supply Chain Management

Supply Chain Management (SCM) encompasses the planning, coordination, and execution of all activities involved in getting a product or service from its conception to the end customer.



## Corporate Innovation

In today's rapidly evolving marketplace, fostering a culture of Corporate Innovation is essential for sustained growth. Our approach goes beyond simply generating ideas.



## Business Process Outsourcing

Business Process Outsourcing (BPO) is a strategic approach where organizations entrust specific business functions to a qualified external provider.

[strategy.proxsisgroup.com](https://strategy.proxsisgroup.com)



## Investment & Financing

In today's dynamic financial landscape, our Investment & Financing services provide comprehensive solutions to help you achieve your long-term financial goals.

[synnovac-capital.com](https://synnovac-capital.com)



## Artificial Intelligence

Proxsis AI is a cutting-edge AI consulting and solutions provider, dedicated to helping businesses harness the transformative power of artificial intelligence.

[proxsis.ai](https://proxsis.ai)



## Legal

Bekerja sama dengan pakar hukum Zulfi Syatria & Partners menghadirkan End-to-End Legal Business Support, menjaga keberlangsungan hingga memaksimalkan kepentingan Anda pada saat sengketa terjadi.

[legal.proxsisgroup.com](https://legal.proxsisgroup.com)

# Our Collaborative Service Ecosystem

As a group of **knowledge-based solutions companies**, Proxisis & Co. is divided into 9 main sub- holding companies with more than 50 business cells:

 <b>PROXISIS</b>   CONSULTING GROUP	Business Management Solutions
 <b>PROXISIS</b>   IT GROUP	IT Solutions (ITGRC & Business Tech)
 <b>PROXISIS</b>   MANAJEMEN INTERNASIONAL	Supply Chain Management & Corporate Innovation
 <b>SYNERGY SOLUSI GROUP</b>	Health, Safety, Environment, Energy Solutions
 <b>PROXISIS</b>   ACADEMY & RESEARCH	People Development, Research & Knowledge Management
 <b>PROXISIS</b>   CERTIFICATION & AUDIT	Testing, Inspection, Certification & Audit
 <b>PROXCARE</b>   PROFESSIONAL SERVICES GROUP	Professional Service Outsourcing
 <b>PROXISIS</b>   LEGAL	Corporate Legal and Litigation support
 <b>S-CAPITAL GROUP</b>	Venture Capital & Business Incubation



## Alur Entrepreneur Development

Pendekatan komprehensif *end-to-end* yang dirancang untuk mengawal perjalanan transformasi pengusaha, mulai dari fase validasi ide hingga pencapaian kematangan skala bisnis dan kesiapan investasi.



## Collaboration Ecosystem

Dalam proses Inkubasi hingga pasca inkubasi, Proxsis menghadirkan collaboration ecosystem guna mempercepat *growth* bisnis entrepreneur.



Dukungan akses kepakaran ahli, infrastruktur manajerial, dan solusi bisnis dari 50+ unit profesional terintegrasi.

Fasilitasi akses permodalan, pembiayaan strategis, dan pendanaan ventura untuk mengakselerasi fase *scale-up*.

Aktivasi jejaring, pembinaan komunitas, dan validasi pasar untuk membangun ekosistem wirausaha muda yang solid.

## Our Program



### Entrepreneur “A” Program

Program pelatihan komprehensif untuk menanamkan fundamental kewirausahaan dan membekali peserta dengan kompetensi manajerial dasar dengan framework **Tangga Bisnis Proxsis** yang telah teruji selama 20 Tahun.



### Coaching & Mentoring

Program **pendampingan bersama Entrepreneur di Proxsis Ecosystem** untuk mentracking perkembangan bisnis dan mengeksekusi strategi scale-up secara presisi sesuai fase Tangga Bisnis.



### Business & Talent Scouting

Program **pencarian dan kurasi talenta serta bisnis potensial**, untuk di inkubasi secara intensif dan dihubungkan dengan peluang pendanaan maupun sinergi strategis dalam Ekosistem Proxsis.



### Entrepreneur Bootcamp

Pelatihan intensif tingkat lanjut yang difokuskan secara taktis pada **akselerasi eksekusi, penetrasi pasar, dan eskalasi skala bisnis** melalui pendekatan kurikulum praktikal yang berorientasi pada hasil nyata.



### Business Transformation Program

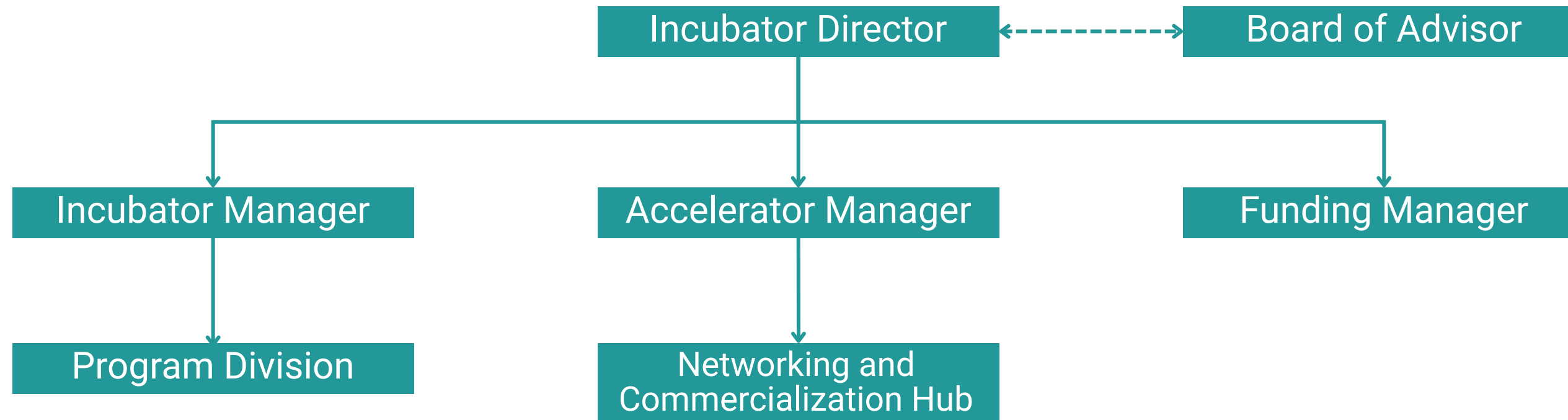
Layanan profesional yang dirancang untuk membantu entrepreneur dalam mentransformasi tata kelola bisnis yang **didampingi secara intensif oleh para expert di Proxsis Ecosystem**.



### Incubation & Event Support

Solusi *end-to-end* bagi institusi yang membutuhkan dukungan program inkubasi kewirausahaan, sekaligus **layanan manajemen acara profesional** untuk setiap agenda dan aktivasi ekosistem dieksekusi secara presisi.

## Incubator Structure



## Board of Advisor



**Rudi Maulana,**  
MBA., CPP

20+ years of experience in strategic business management.



**Roni Sulisty Sutrisno,**  
B.Eng, CLA, ERMCP, CACP, GRCP, GRCA

20+ years of experience in strategic business management.



**Aditya Prima Putera,**  
SE., M.Ak.

10+ years of experience in strategic business management.



## Our Core Team



**Tika Rostika,** MBA  
Incubator Director

10+ years of experience in strategic business management and investment.



**R Adhikera,** SE., M.Sc  
Incubator Manager

5+ years of experience in incubation program, and business consultation.



**Aditia Pratama,** S.M  
Accelerator Manager,  
Networking & Commercialization Hub

5+ years of experience in acceleration program, and business consultation.



**Rafi Ghani Razak,** S.M  
Funding Manager

(Supported by Synnovac Capital)  
RSA® Certified, expert in business valuation, & investment feasibility.



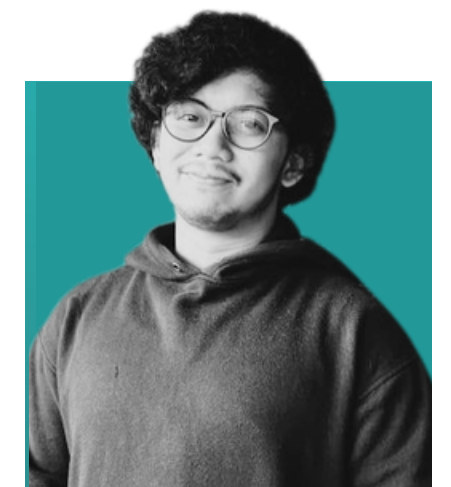
**Reza Fahima,** SE.  
Program Division

Expert in program monitoring, documentation, and operational.



## Our Entrepreneurs

Para *entrepreneur & expert* pada ekosistem Proxsis yang siap membantu mempercepat *growth* bisnis anda.



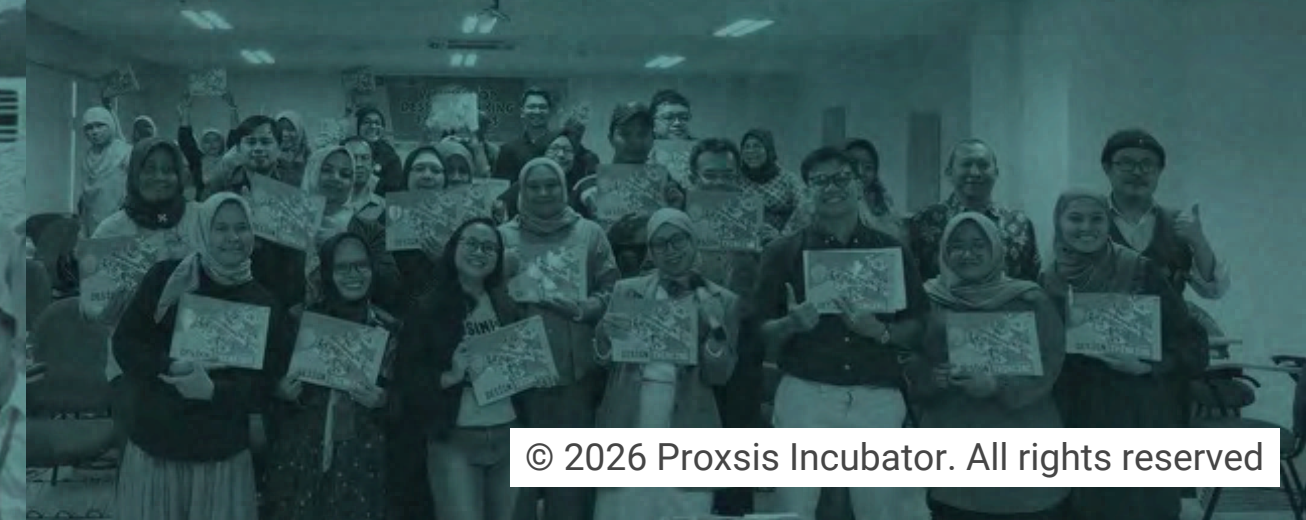
## Our Patnars





# Driving Impact, Enabling Growth

*Empowering entrepreneur to scale and build a sustainable business excellence.*



## E-Hub Development Proqram

Kerjasama dengan **Kementerian UMKM RI**

Mengeksekusi rangkaian Business Coaching Clinic dan Ecosystem Meetup di empat kota utama untuk menyukseskan program akselerasi nasional guna meningkatkan kapabilitas scaling up UMKM.

Dipercaya oleh Kementerian UMKM RI sebagai fasilitator strategis, intervensi ini mendukung mandat pengentasan middle-income trap dan mencetak pengusaha terkurasi sebagai motor penggerak ekonomi daerah.

### Impact

**800+** Entrepreneurs Registered

#### Semarang

100 Entrepreneur Curated  
10+ Local Communities

#### Surabaya

100 Entrepreneur Curated  
10+ Local Communities

#### Bandung

100 Entrepreneur Curated  
10+ Local Communities

#### Tangerang

100 Entrepreneur Curated  
10+ Local Communities

**40** Top Entrepreneurs Next Stage



**Semarang**



**Bandung**



**Surabaya**



**Tangerang**



## SheConnect Champion Program

Kerjasama dengan **Indosat Ooredoo Hutchison**

Menyelenggarakan klinik bisnis intensif dan pendampingan adopsi ekosistem teknologi digital di ITB Innovation Park untuk mengakselerasi pemberdayaan *Womanpreneurs*.

Mendukung inisiatif strategis Indosat Ooredoo Hutchison, eksekusi program ini mendukung ekosistem digital dan mendukung lahirnya pengusaha perempuan tangguh sebagai katalisator inovasi.

### Numbers:

**200+** Womanpreneur Registered

**10+** Local Communities

**120** Womanpreneur Curated

**10** Top Womanpreneur Next Stage



## Sinergi Pendampingan Wirausaha Inklusi dan Inovatif Provinsi Bali

Kerjasama dengan **Kementerian UMKM RI**

Merancang dan menjalankan program pendampingan fundamental bisnis dan pemulihan operasional usaha yang secara spesifik menargetkan pengusaha perempuan di Denpasar pasca bencana banjir.

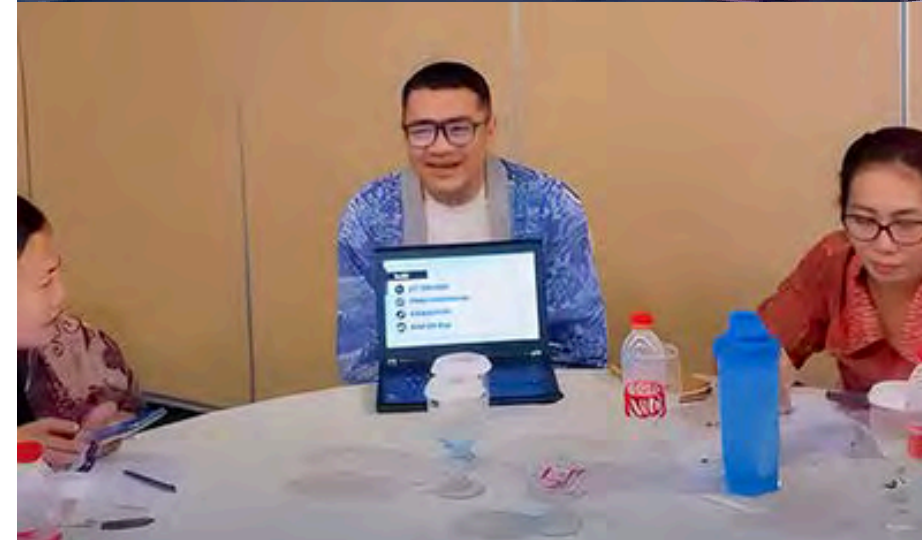
Menjadi mitra strategis Kementerian UMKM RI, intervensi pemulihan ekonomi ini secara cepat merespons urgensi resiliensi lokal, membangun kembali fondasi bisnis yang adaptif dengan dampak sosial yang nyata.

### Numbers:

**200+** Womanpreneur Registered

**10+** Local Communities

**50** Womanpreneur Curated



## Inkubator Bisnis Ekonomi UMKM 2025

Kerjasama dengan BAPPEDA Kab. Tangerangl

Menjalankan program inkubasi komprehensif di Kabupaten Tangerang yang difokuskan pada pendampingan bisnis UMKM melalui *Coaching Clinic* dan pendampingan intensif.

Mendukung BAPPEDA Kab. Tangerang, untuk membantu UMKM di kabupaten Tangerang dalam merancang dan membangun bisnis untuk meningkatkan bisnis UMKM.

### Numbers:

**100+** Entrepreneur Registered

**5+** Local Communities

**40+** Entrepreneur Curated



## Entrepreneur Development 2024

Kerjasama dengan Kementerian KUMKM RI

Program pendampingan intensif selama 3 bulan di empat kota besar, difokuskan pada *Business Mentoring* mendalam untuk membantu UMKM meningkatkan bisnis scalable.

Sebagai mitra ahli Kementerian Koperasi dan UKM RI, pendekatan ini berhasil memfiltrasi potensi kewirausahaan nasional, memicu pergeseran paradigma manajerial peserta, dan membangun kolaborasi bisnis lintas kota.

### Numbers:

**3000+** Entrepreneur Registered

**10+** Local Communities

**200+** Entrepreneur Curated



## Bandung Investment Summit 2025

### Kerjasama dengan DPMPTSP Kota Bandung

Memfasilitasi agenda strategis *Investor & Partners Meetup* tingkat regional, merancang kerangka pertemuan dan negosiasi B2B serta B2G yang presisi guna mempertemukan proyek potensial dengan para pemodal korporat.

Mendukung penuh DPMPTSP Kota Bandung, peran fasilitator ini sukses mengonsolidasikan komitmen modal strategis, memposisikan Bandung sebagai destinasi investasi top-tier untuk mewujudkan *Smart Future*.

#### Numbers:

**400+** Corporate Entrepreneur & Investor Invited



## Investor Day

Kerjasama dengan **DPMPTSP Kota Bandung**

Memfasilitasi *exclusive meetup* antara potential investor dengan proyek strategis kota Bandung di Jakarta.

Menjadi mitra strategis DPMPTSP Kota Bandung dalam penyelenggaraan kegiatan ini.

### Numbers:

**300+** Investor & Partner Invited

**10+** Local Project Deal



## Bandung Investment Summit 2024

Kerjasama dengan DPMPTSP Kota Bandung

Memfasilitasi agenda strategis *Investor & Partners Meetup* tingkat regional, merancang kerangka pertemuan dan negosiasi B2B serta B2G yang presisi guna mempertemukan proyek potensial dengan para pemodal korporat.

Mendukung penuh DPMPTSP Kota Bandung, peran fasilitator ini sukses mengonsolidasikan komitmen modal strategis, memposisikan Bandung sebagai destinasi investasi top-tier untuk mewujudkan *Smart Future*.

### Numbers:

**300+** Corporate Entrepreneur & Investor Invited



## Our Main Office

### Proxsis & Co HQ (Jakarta)

Permata Kuningan Building 17th Floor, HR Rasuna Said, Jl. Kuningan Mulia, Menteng Atas, Setiabudi, South Jakarta City, Jakarta 12920  
P: (021) 837 086 79  
M: +62 811-1797-485  
cs@proxsisgroup.com



### The Hive Office (Jakarta)

Tamansari Hive Office, Jl. DI. Panjaitan No.Kav. 2, RT.11/RW.11, Cipinang Cempedak, Kecamatan Jatinegara, East Jakarta City, Jakarta 13340  
M: +62 811-9334-860  
cs@synergysolusi.com



### East Office (Surabaya)

AMG Tower Lantai 17, Jl. Raya Dukuh Menanggal No. 1A, East Java, Gayungan Surabaya, Indonesia 60234  
P: (031) 825 17 000  
M: +62 811-1798-353  
cs.sby@proxsisgroup.com



**Note:** We have support offices for specific business units, subsidiaries, and/or branches in Bandung, Padang, and Balikpapan



## Incubator Profile



*Driving Impact, Enabling Growth!*

☎ +62 857-5918-1715 (Tika)

✉ [proxsis.incubator@gmail.com](mailto:proxsis.incubator@gmail.com)

📍 Permata Kuningan Building, Jl. H. R. Rasuna Said Jl. Kuningan  
Mulia 17th Floor, Setiabudi, South Jakarta City, Jakarta 12920

